

CARDEV[®]

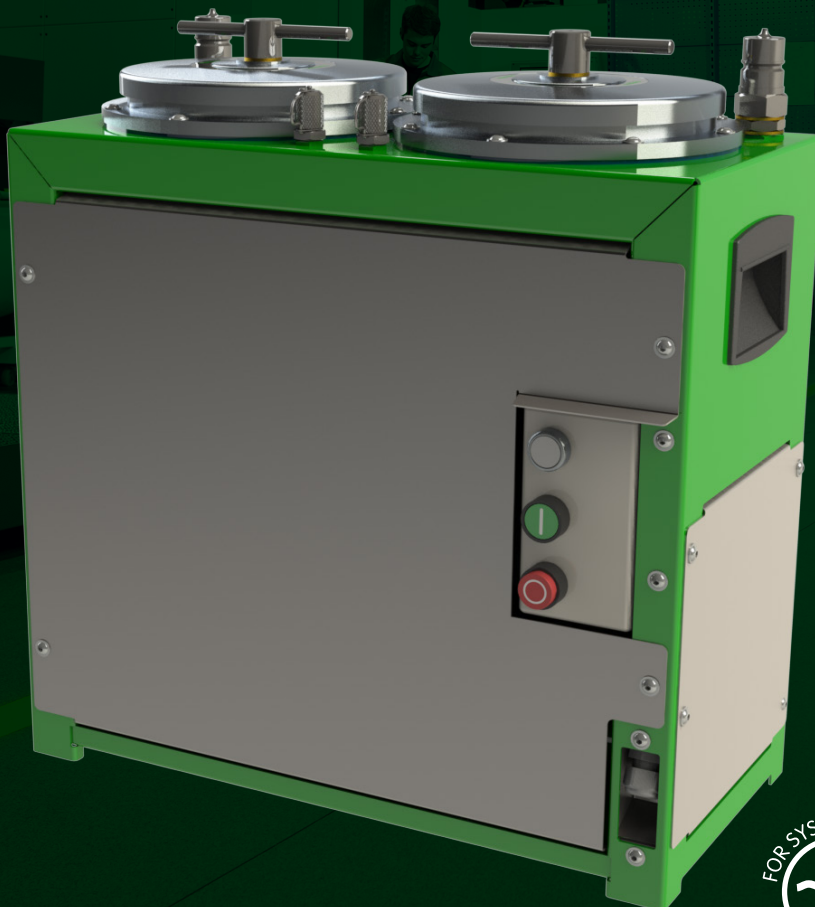


Product Datasheet

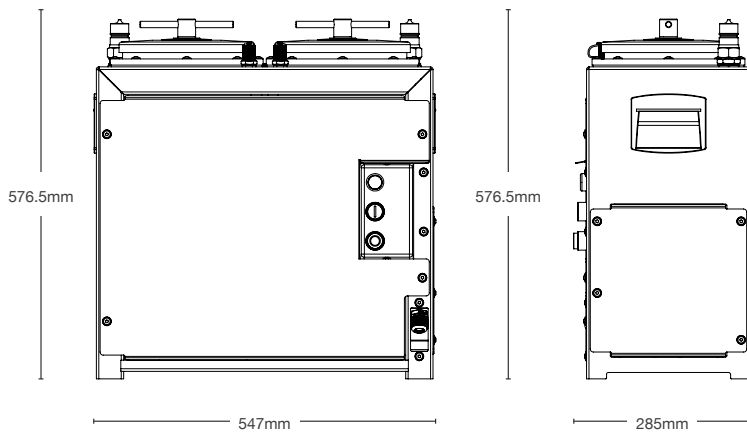
2S-500BS

Portable Offline Filtration System

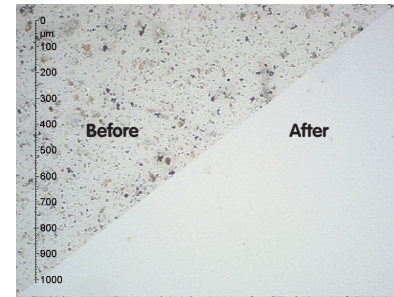
- Simple controls
- Over-pressure protection
- Integrated sample points – allows connection to ETL ConMon particle monitors / oil sampling



Dimensions



Particles Removed



Oil cleanliness maintained at better than new levels
(Down to 13/11/8 (ISO 4406: 1999)
- Class 2 (NAS 1638).

Benefits

- Removes varnish and microparticles (down to less than 1 micron)
- Removes free and dissolved water contamination
- Increases system reliability
- Prevents system corrosion
- Reduces component wear
- Extends oil life and generates CO₂ savings
- Reduces operating costs

Application Examples

Suitable for all types of industrial applications:

- Power generation
- Plastic moulding
- Cement Industry
- Manufacturing plants
- Service workshops

Water Removed



Removes free and dissolved water down to < 50 ppm (0.005%)

| Max Operating Temp | IP Rating | Flow rate (l/h) | Pump Suction Lift | Voltage | Current Draw | Dimensions (mm) | | Weight (kg) | Filter Element Type | Retention Capacity (per set) | |
|--------------------|-----------|-----------------|----------------------------|---------|--------------|-----------------|-----|-------------|---|------------------------------|------------------------|
| | | | | | | H | W | | | | |
| 60°C | IP55 | 220 | Self-priming to 5.5 metres | 110V | ≤ 6.5 Amps | 576.5 | 547 | 44 | Standard fit: 2 x SDFC (oil based fluids) | ≤ 5 kg Dirt | ≤ 1.56 Litres of water |
| | | | | 230V | ≤ 3.0 Amps | | | | | | |
| | | | | 400V | ≤ 1.5 Amps | L | | | | | |

Note: Flow rates, oil cleanliness levels and moisture removal results are based on ISO VG 46 Mineral Oil @ 40°C

ETL Fluid Experts

ETL Fluid Experts Ltd
 Grimbald Crag Road, Knaresborough
 North Yorkshire, HG5 8PY

T +44 (0)1423 522911
 E sales@etlfe.com

www.etlfluidexperts.com

The specification and photography is for reference only and may be subject to change.
 © ETL Fluid Experts Ltd. All rights reserved.

V02-04-05-22-M2057